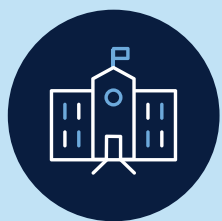


# COVID-safe

## Our school is operating at Level 3 plus



From 18 October all department employees, volunteers and students on professional experience placements required to support the staged return to school need to be fully vaccinated against COVID-19 or hold a valid medical contraindication certificate.



QR code check-in and check-out required for all staff and visitors.



Face masks are **required** indoors for all staff and students Year 7 and above.



Follow health advice and keep your child home if they are unwell.



For the latest information, visit  
[education.nsw.gov.au/covid-19](https://education.nsw.gov.au/covid-19)